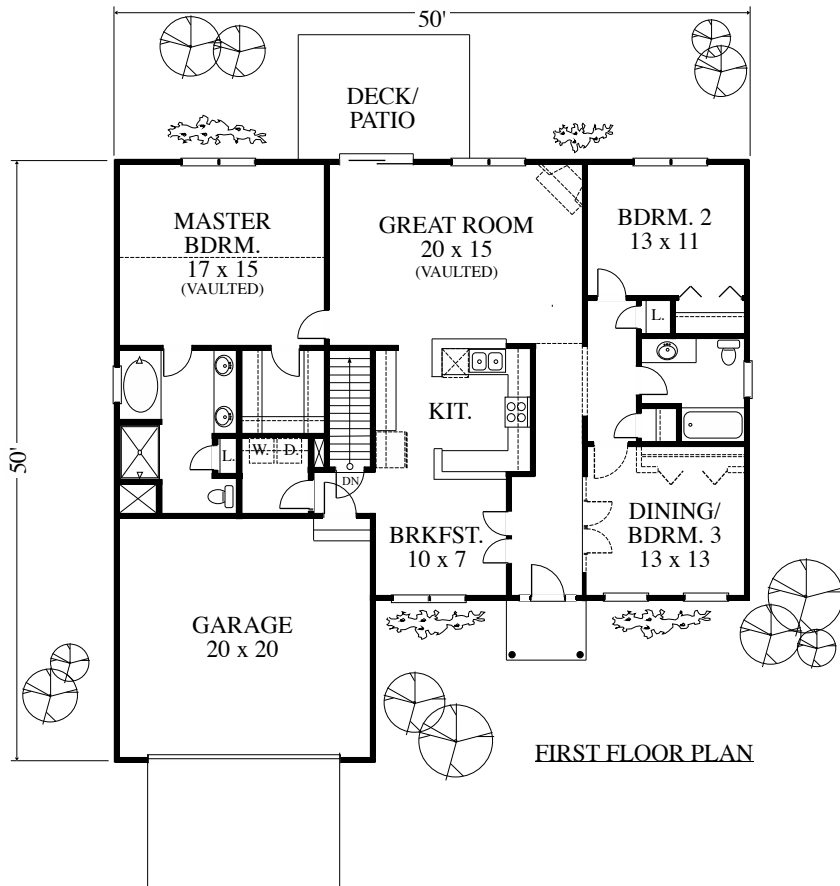
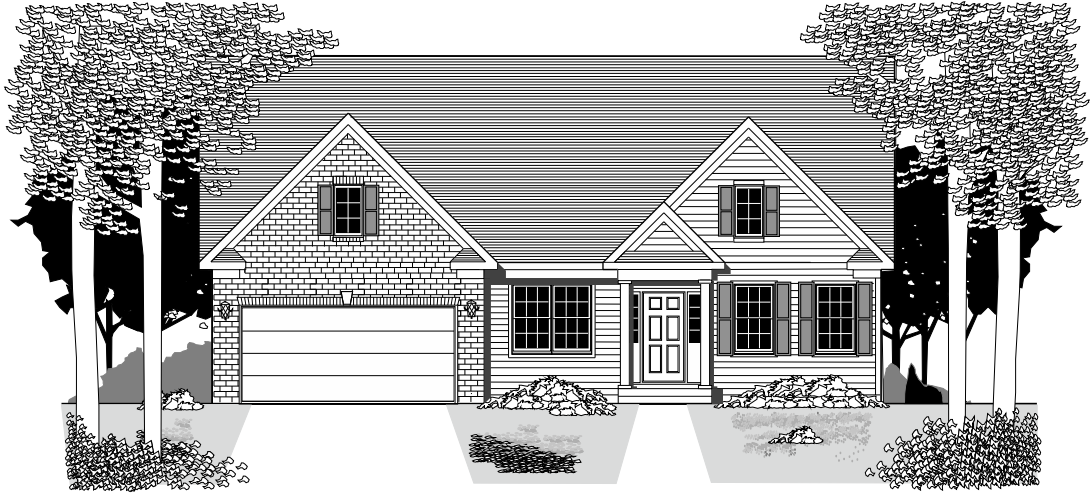


# MODEST MOVE-DOWN



Copyright 2006 by James Wentling/Architects

126-01 A THE STONINGTON

1,678 SQ FT

This three bedroom ranch plan features a spacious great room as well as a very large master bedroom within an efficient footprint. The exterior elevation presents an impressive image in spite of the ease of construction for the roof framing. This plan is documented with a basement foundation.

PRICE C

JAMES WENTLING / ARCHITECTS

PRICE C

Plan Library Service