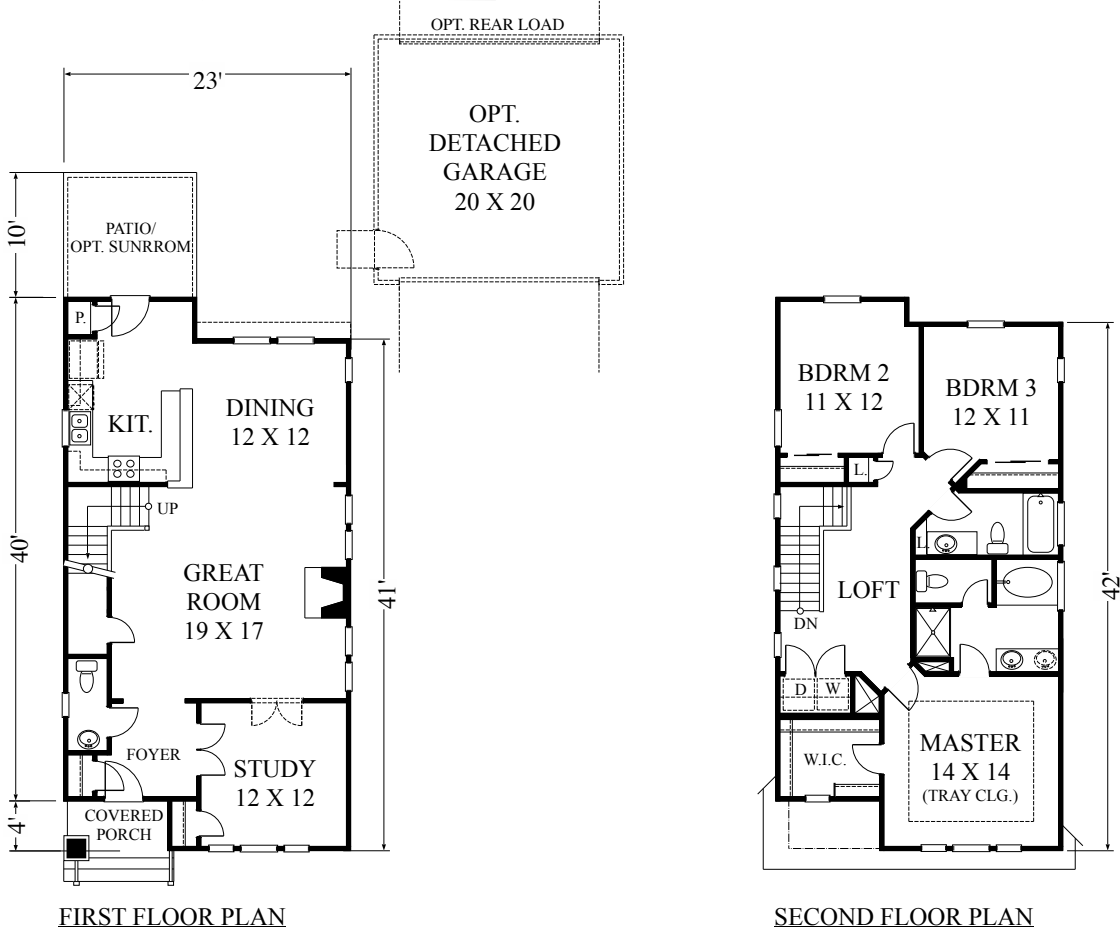


SMALL SINGLE / TND PLAN



Copyright 2009 by James Wentling/Architects

113-15.507 A THE HADLEY

1,870 SQ FT

This "story-book house" has a charming elevation which will grace any TND street. The first floor has a study off the foyer with a combined great room, dining and kitchen in the rear of the plan. The design works with a detached garage which can be front or rear-loaded. This plan is documented with a slab foundation and two alternate elevations.

PRICE B

JAMES WENTLING / ARCHITECTS

PRICE B

Plan Library Service